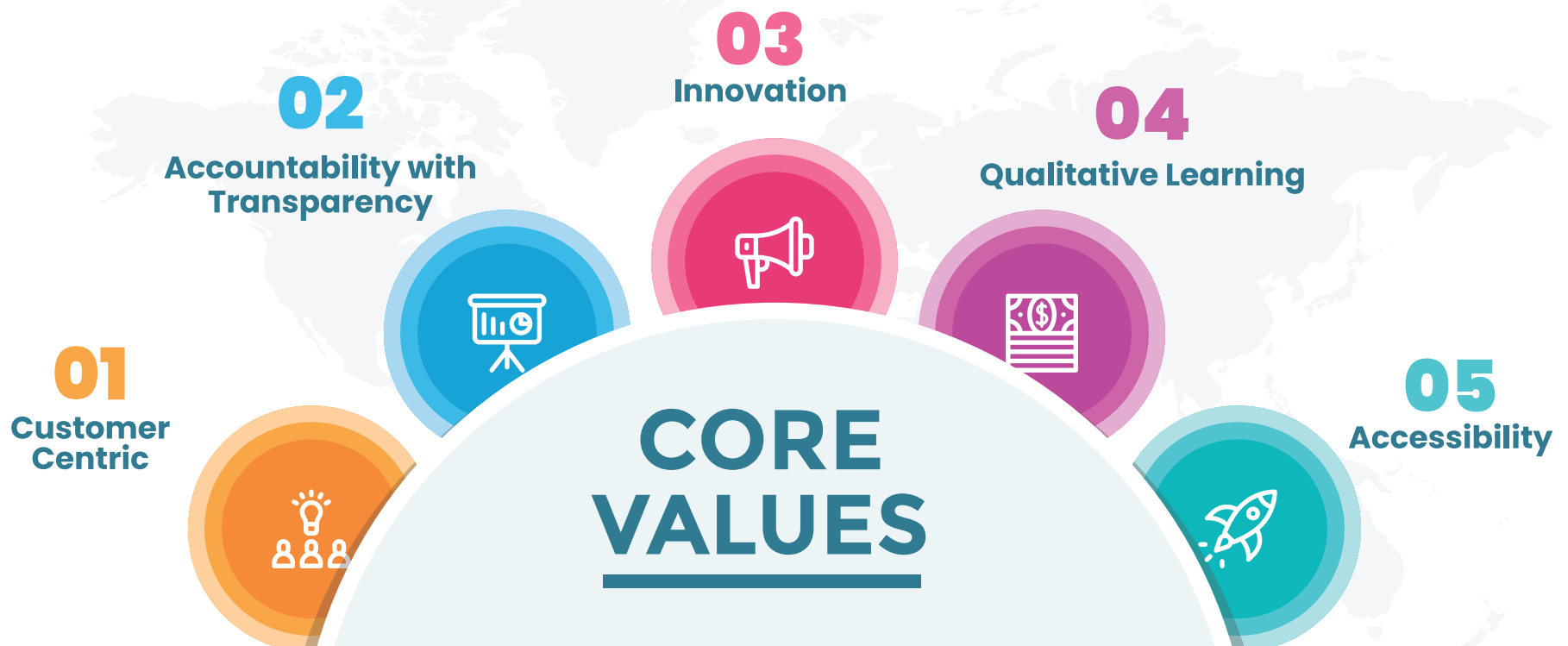


# POST GRADUATE PROGRAMS

**Academic Partners**





## OUR VISION

To empower individuals and organisations to achieve their full potential through accessible and innovative online learning.



# About Us

MIT School of Distance Education (MITSDE) is a premier institution offering world-class distance learning programs that cater to the evolving needs of modern professionals. Approved by AICTE, MITSDE combines academic excellence with flexibility, enabling learners to upskill and achieve their career aspirations without compromising their personal or professional commitments.

With a robust Learning Management System (LMS), MITSDE delivers a seamless educational experience through engaging video lectures, comprehensive study materials, and expert faculty support. The diverse portfolio of programs includes PGDM, PGCM, PGDBA, and PGDM Executive across domains like Marketing, Project Management, Operations, Finance, HR, Supply Chain, Business Analytics, and more, designed to meet industry demands and foster career growth.

MITSDE is committed to holistic development, offering 100% placement assistance, industry-relevant curriculum, and personalized mentorship. By blending innovation with accessibility, the institution empowers learners to thrive in competitive global markets, making education a transformative journey.



# Director's Message



## Dr. Suhrud Neurgaonkar

Dear Learners,

"Education is the most powerful weapon which you can use to change the world," Nelson Mandela once said, and this vision profoundly resonates with our unwavering belief in the transformative power of learning. MITSDE empowers students to excel in their chosen fields by equipping them with cutting-edge knowledge and skills. Our intent is to foster a generation of career-ready learners who can drive meaningful change in their communities. Education is not just about personal growth but also about contributing to the collective betterment of society. This philosophy forms the cornerstone of MITSDE, where every program is designed to unlock potential, inspire innovation, and pave the way for success.

Welcome to the MIT School of Distance Education (MITSDE), where tradition meets innovation to create a learning experience. At MIT School of Distance Education (MITSDE), the mission is to deliver exceptional education that sharpens skills and shapes individuals into confident, capable professionals. By leveraging state-of-the-art technology, MITSDE provides a transformative learning experience designed to empower and inspire.

A strong foundation of core values guides every step at MITSDE. A learner-centric approach ensures programs are tailored to meet diverse needs, while open communication fosters accountability and transparency. Continuous innovation drives the evolution of our curriculum, ensuring it remains relevant and impactful. The institute is committed to providing high-quality, flexible, accessible learning opportunities that empower learners to thrive in an ever-changing world.

With a vision to become a leading global learning organization, MITSDE aims to deliver programs that enhance skills and unlock potential, creating brighter futures and stronger communities.

# Unique Features

1

Lifetime Career Support

6

Skill-Enhancing Bootcamps

2

Cutting-Edge LMS

7

Expert-Led Live Sessions

3

Flexible No-Cost EMI

8

Comprehensive Student Assistance

4

Holistic Development Hub  
(MIT Office of Career Services,  
MITSDE Labs)

9

Hindi Subtitles for Recorded Videos

5

Hands on Industry relevant  
Tools Training

10

Certification from KPMG & EY

# MITSDE Offerings

## Post Graduate Diploma in Management (PGDM)

Duration: 24 Months | 4 Semesters | Eligibility: Any Graduate | **Course Fee:** ₹ 82,000

### PGDM Project Management

This course, guided by renowned trainers and experts, empowers project managers with the knowledge and skills to effectively plan, execute, and evaluate projects for successful outcomes.

**Optional Certification in Project Analytics**  
validated and certified by KPMG India.

### PGDM Operations Management

PGDM in Operations Management equips you to tackle industry challenges head-on. The curriculum, crafted by academic and industrial experts, reflects the current global industry trends, preparing you for opportunities on a global scale.

**Optional Certification in Operations Analytics** validated and certified by KPMG India.

### PGDM Human Resource Management

A PGDM in Human Resources is designed by a team of experienced HR Professionals. This comprehensive course focuses on the theory, technology and changing practices worldwide.

**Optional Certification in Human Resource Analytics** validated and certified by KPMG India.

### PGDM Marketing Management

The course offers skills in strategy, global markets, and digital marketing trends, fostering innovation and global readiness for future markets.

**Optional Certification in Marketing Analytics**  
validated and certified by KPMG India.

### PGDM

### Construction & Project Management

The course prepares you for challenging roles in construction and real estate, offering the best theoretical and practical knowledge. It helps you develop leadership skills to manage teams of consultants, builders, and site managers.

**Optional Certification in Construction & Project Analytics** validated and certified by KPMG India.

### PGDM Finance Management

The PG Diploma in Finance Management is tailored for the growing financial sector. It prepares you for fintech, investments, and other finance-related jobs in the digital era.

**Optional Certification in Financial Modeling & Valuation** validated & certified by EY India

## **PGDM**

### **Information Technology Management**

The PGDM IT course offers a comprehensive understanding of theoretical concepts and emerging technologies in the IT field. Designed for busy IT professionals, the program accommodates tight working schedules while providing valuable insights and skills.

### **PGDM Logistics & Supply Chain Management**

The course covers aspects like Blockchain, e-commerce logistics management, risk management framework and other global logistics & supply chain trends.

### **PGDM Material Management**

The PG Diploma in Material Management offers global opportunities in the digital age of e-commerce. It covers material planning, purchasing, inventory control, and more.

### **PGDM Banking & Financial services**

The course covers essential management skills in banking, insurance, mutual funds, stocks, and other finance-related functions, preparing talented managers for the industry.



# Post Graduate Certificate in Management (PGCM)

Duration: 12 months | Semesters: 2 | Eligibility: Any graduate | Course Fee: 58,000

## PGCM Business Analytics

Our PGCM in Business Analytics equips you with the latest business analytics tools and techniques, using real-world examples to ensure that you are market-ready

**Optional Certification in Business Analytics and Business Intelligence validated and certified by KPMG India.**

## PGCM Digital Marketing

The PGCM Digital Marketing course delves into the ever-evolving field of digital marketing, offering practical application of the latest tools and techniques through hands-on learning.



# Post Graduate Diploma in Management (Executive) (PGDM-Ex)

Duration: 15 months | Semesters: 2 | Eligibility: Graduate + 5 years work exp | Course Fee: ₹ 87,000

## PGDM-Ex Modern Project Management

The Executive Diploma program in Modern Project Management focuses on data mining techniques, data interpretation & data visualisation techniques and predictive modelling applicable to manufacturing service as well as infrastructure industries.

**Optional Certification in Project Analytics validated and certified by KPMG India.**

## PGDM-Ex Technology & Operations Management

The PGDM –Ex course in Technology & Operations Management will provide a clear and practical understanding of core principles of operations management, including practical applications of analytics and techniques used to manage production and equipment effectiveness.

**Optional Certification in Operations Analytics validated and certified by KPMG India.**

## PGDM-Ex Human Capital Management

PGDM – Ex in Human Capital Management focuses on the fundamentals of human resource-management and provide an in-depth understanding of the charter and mission of human resources or Human 'Capital'.

**Optional Certification in HR Analytics validated and certified by KPMG India.**

## PGDM-Ex Construction & Project Management

PGDM-Ex in Construction & Project Management equips you with the skills to manage all aspects of construction projects, from planning and resourcing to risk mitigation and reporting. It also covers industry-standard tools like Primavera for efficient project execution.

**Optional Certification in Construction & Project Analytics validated and certified by KPMG India.**

## PGDM-Ex Finance Management

The PGDM Executive in Finance Management equips working professionals with advanced skills in financial modelling, valuation, and Excel, designed by EY experts and industry leaders. Ideal for those aiming for leadership roles in finance, the program emphasizes practical, robust financial analysis for strategic decision-making and growth.

**Optional Certification in Financial Modeling & Valuation validated & certified by EY India**

## PGDM-Ex Material Management

The PGDM Executive in Materials Management by MITSDE is designed for mid- to senior-level professionals to enhance skills in supply chain, procurement, inventory, and logistics. The program focuses on strategic coordination, cost control, and resource optimization, with real-world case studies for practical, industry-relevant learning.

## **PGDM-Ex - Global Logistics & Supply Chain Management**

Our PGDM-Ex in Global Logistics and Supply Chain Management helps to advance career skills by gaining an in-depth perspective of global supply chains and developing the strategies and analytical tools to manage them.

## **PGDM-Ex Banking & Financial Services**

PGDM-Ex in Banking & Financial Services explores contemporary banking practices like microfinance and global finance, providing insights into current trends, investment patterns, and their economic impact.

## **PGDM-Ex Strategic Marketing Management**

Designed for senior leaders, the PGDM-Ex Strategic Marketing Management program equips you with the latest marketing frameworks and tools, including traditional, digital, and CRM strategies, to drive organisational success.

**Optional Certification in Marketing Analytics validated and certified by KPMG India.**

---

## **Post Graduate Diploma in Business Administration (PGDBA)**

**Duration: 24 months | Semesters: 4 | Eligibility: Any Graduate | Course Fee: ₹ 95,000**

### **PGDBA in Operations Management**

The PGDBA in Operations course shall make you proficient in understanding and assessing productivity, analysing operations, and maximising profits

### **PGDBA in Finance Management**

PGDBA in Finance course provides the much-needed career boost and focuses on financial modelling, finance markets, its movement and overall economic impact for a rewarding career in the finance domain.

### **PGDBA in Human Resource Management**

The PGDBA course in Human Resource Management focuses on the innovation and trends persisting in Human Resource Management globally.

### **PGDBA in Information Technology**

PGDBA program with specialisation in IT introduces you to the imperative terms and concepts such as software development programs, Artificial Intelligence (AI), Cloud computing, Big Data, Database Management systems, etc.

### **PGDBA in Marketing Management**

PGDBA program in Marketing Management is tailored to cater to the distinctive needs and time constraints of enthusiastic freshers and busy professionals alike, the flexible and insightful course is formulated in accordance with the latest trends in marketing and branding.

# Professional Certificate Programs

Duration: 6 Months | Eligibility: 10th / 12th Pass | Fee: ₹ 25000

## Certification In Project Management

Master the art of project management with our certification program, ensuring success in every endeavor

## Certification In Operations Management

Gain the expertise to streamline operations, drive innovation, and excel in diverse industries with our Operations Management certification

## Certification In Human Resource Management

Empower your HR career with our certification in Human Resource Management, driving organizational success through effective people management.

## Certification In Marketing Management

Unleash your marketing prowess with our certification in Marketing Management, shaping brand success in the digital age.

## Certification In Finance Management

Unlock financial acumen and lead with confidence through our Finance Management certification

## Certification In Material Management

Elevate your inventory prowess with our Material Management certification, ensuring seamless operations and cost efficiency.

## Certification In Logistics and Supply Chain

Master the art of supply chain optimization with our Logistics and Supply Chain Management certification.



# Executive MBA (EMBA) Program

Duration: 24 Months | 4 Semesters | Eligibility: Any Graduate | Course Fee: ₹ 1,35,000

## EMBA Specializations

### EMBA Finance Management

The Executive MBA in Finance equips professionals with advanced skills in financial management, investment analysis, and corporate finance. Its flexible, practical approach helps you upskill without career breaks, preparing for leadership roles in banks, NBFCs, fintech, and corporate finance.

### EMBA Marketing Management

The Executive MBA in Marketing Management equips professionals with advanced skills in brand strategy, digital marketing, and consumer behavior. With a practical, industry-ready approach, it prepares you to lead growth initiatives, craft impactful campaigns, and stay ahead in today's digital-first marketplace.

### EMBA Project Management

The Executive MBA in Project Management, developed with HCL Technologies, equips professionals with leadership and project delivery skills for industries like IT, finance, and construction. Combining traditional and modern project tools, it prepares you to manage projects end-to-end with confidence in today's fast-paced business world.

### EMBA Human Resource Management

The Executive MBA in HR Management trains professionals to lead modern people operations with advanced skills in talent acquisition, employee relations, and HR analytics. With a practical, industry-focused approach, it blends HR principles with data-driven strategies to help you drive workforce transformation and business growth.

### EMBA Operations Management

The Executive MBA in Operations Management builds expertise in operations strategy, supply chain, and process optimization. Designed for working professionals, it combines core business skills with practical tools to improve efficiency, reduce costs, and drive operational excellence across industries.

### EMBA Business Analytics & AI

The Executive MBA in Business Analytics and AI, created with HCL Technologies, equips professionals with practical skills in data analysis, AI tools, and predictive decision-making. It prepares you to drive business transformation by mastering analytics and AI applications across industries.

# Dual Specialization Program: PGDM Executive + EMBA

Duration: 27 Months | 4 Semesters | Eligibility: Graduate + 5 years work exp

Course Fee: ₹ 1,75,000

MITSDE, in collaboration with Avantika University, offers a unique Dual Specialization Program designed for working professionals. Choose one specialization in PGDM Executive (15 months) and another in EMBA (12 months), completing two industry-relevant qualifications in just 27 months—without career breaks. Earn AICTE-approved and UGC-recognized credentials with an industry-relevant, advanced curriculum

## PGDM Executive Specializations (15 months)

- Modern Project Management
- Technology and Operations
- Human Capital Management
- Strategic Marketing Management
- Global Logistics & Supply Chain Management
- Construction & Project Management
- Banking & Financial Services
- Finance Management
- Material Management

## EMBA Specializations (12 months)

- Finance Management
- Human Resource Management
- Marketing Management
- Operations Management
- Project Management
- Business Analytics & AI



# Academic Services

MITSDS's academic department provides dedicated mentorship to guide students throughout their learning journey.

## Key highlights -

- Interactive & Flexible Live sessions
- One on one doubt clearing sessions
- Live sessions delivered by Industry experts from diverse domains
- Exclusive hands on sessions on practical and industry relevant tools
- Exam preparation guidance session
- Simple yet effective assessment via MCQs-based proctored mode exam
- Peer to peer Learning Platform-Synergy sphere
- Domain-wise project guidance
- Efficient query resolution with TAT of 5h
- Learning assistance through video subtitles in recorded videos

# Student Success Services

**The MITSDE team ensures a smooth academic journey through:**

- Exceptional Student Support:

We pride ourselves on delivering personalized and timely assistance to address every learner's unique needs.

## **Key Services Include:**

- Automated Ticket Management System (TMS):  
Ensuring resolutions within 8 working hours.

- Comprehensive Assistance:

We provide complete support to learners, starting from their enrollment process through their academic journey and beyond.



# Placement and Alumni Relations

MITSDE's placement team – an expert in recruitment and industry connections, provides guidance, training, and resources to enhance your employability and facilitate successful placements.

- MITSDE is the only online institution providing Job and career enhancement support to its students and alumni, for lifetime.
- Exclusive offering of the TCS ION Employability Readiness Program - a self-paced certifications and employment readiness assessment and lifetime access to the TCS ION job portal (free for MITSDE students only). Streaming of a WhatsApp channel - a unique proposition for MITSDE for students, alumni, and the public, to apply for jobs on your mobile.
- Career enhancement sessions for students and alumni, e.g. how to prepare an ATS-compatible resume, domain-specific practices, employment, and research topics.
- Equal job opportunities for freshers and experienced professionals from top MNCs.

In 2024, our learners were placed in Accenture, Hexaware, JK Tyres Ltd, Zigram, Genpact, e-Teams, Patterns Hiring LLC, No Broker, FirstCry, Kotak Mahindra Bank, Bharti Axa, Start Health, Ajanta Bottles, Just Dial, IIFL, Samasta Ltd, BetterAlt, Guardians Groups, Corizo, Bigbulls, Acura Solutions, Niv-aBupa, Rupeek, etc.



# Distinguished Alumni



**Atul Bhargava**

General Manager - Civil  
Gujarat Metro Rail Corporation  
Ltd, Gandhinagar



**Dinesh Mandavilli**

Deputy Manager  
Tata Projects Limited, Mumbai



**Parag Samant**

DGM Cost Engineering  
Tata Motors Ltd, Pune



**Ajith Kumar M**

Proposal Manager  
GBH International Group, UAE



**Gauri Upendra  
Pendse**

Financial Accounting and Reporting  
Tion Renewables AG, Germany



**Prashant  
Chaudhari**

Assistant Vice President  
IDFC First Bank, Pune



**Aman Malik**

Zonal Head  
Mahindra & Mahindra Ltd,  
Chandigarh



**Gurudatta Bhat**

General Manager - Engineering  
Lupin, Goa



**Raghwendra  
Pankaj**

Chief Manager  
Bank of Baroda, Hyderabad



**Amarendra  
Kumar Shukla**

Country Business Manager  
Diffusion Engineers Ltd, Jakarta



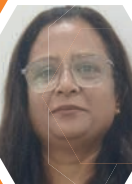
**Kavita Koirala**

Analyst  
PwC, Pune



**Rishi Kumar  
Tiwari**

Deputy Manager -  
Project Planning & Monitoring  
Adani Green Energy Ltd, Rajasthan



**Amita Nagaraj**

Head - Finance and Operations  
Johns Hopkins India Pvt Ltd, Pune



**Pankaj Amle**

RF Engineer  
NOKIA, Bengaluru



**Sabesan  
Jambunathan**

Director  
Cognizant Tech. Solution Ltd,  
Chennai



**Andhare  
Kamlesh Bhaskar**

Sr Project Manager  
Mphasis Ltd., Pune



**Pankaj Malwade**

Deputy Manager  
Bharat Forge, Pune



**Satyendra  
Nath Mishra**

Officer - Dy Commandant  
ITB Police, Kolkata

# Corporate Connects

